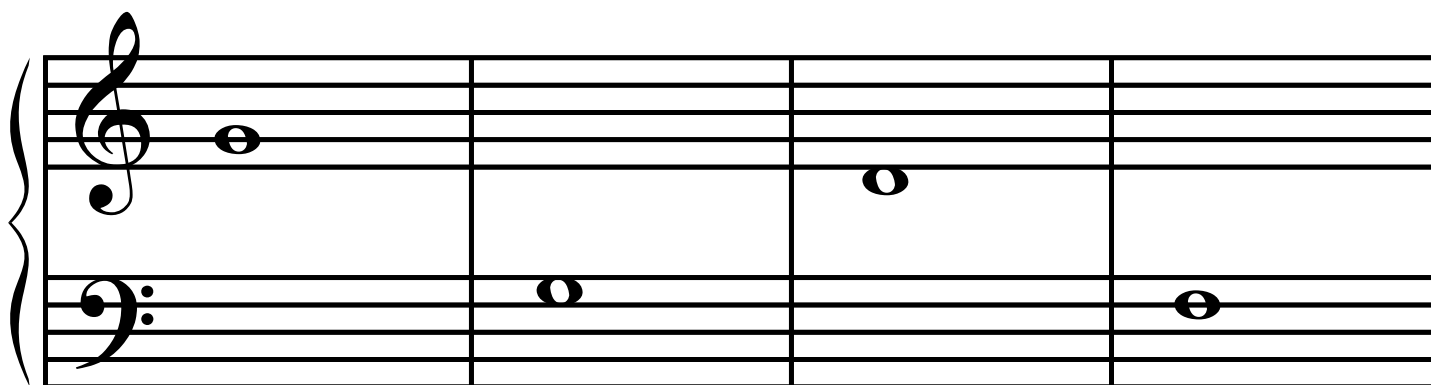


# MusIQ Club Beginner Level 3A

## More Sharps

Draw a sharp sign in front of each of the notes on the Grand Staff below. Remember that sharps signs come **before** the note, and are in the **same line or space** as the note.



Sharps tell us to play the note one semitone higher than it is written.  
**When a note is made sharp, that sharp lasts until the next bar line.**  
That means that any other notes on that same line or space in that measure become sharp as well.

Circle all the sharp notes in this melody:



How many sharps did you find? \_\_\_\_\_